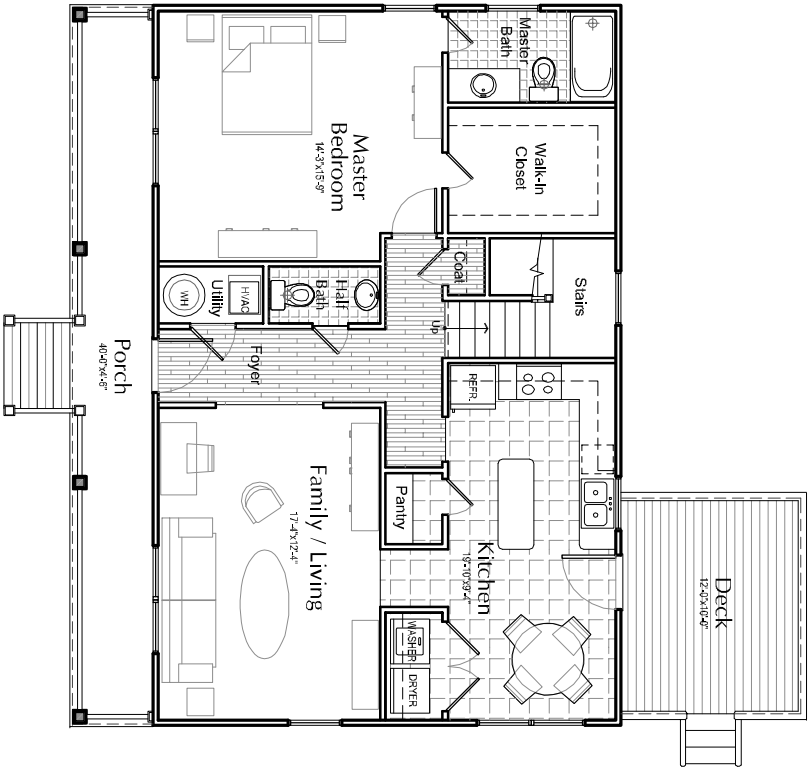


# The Westover

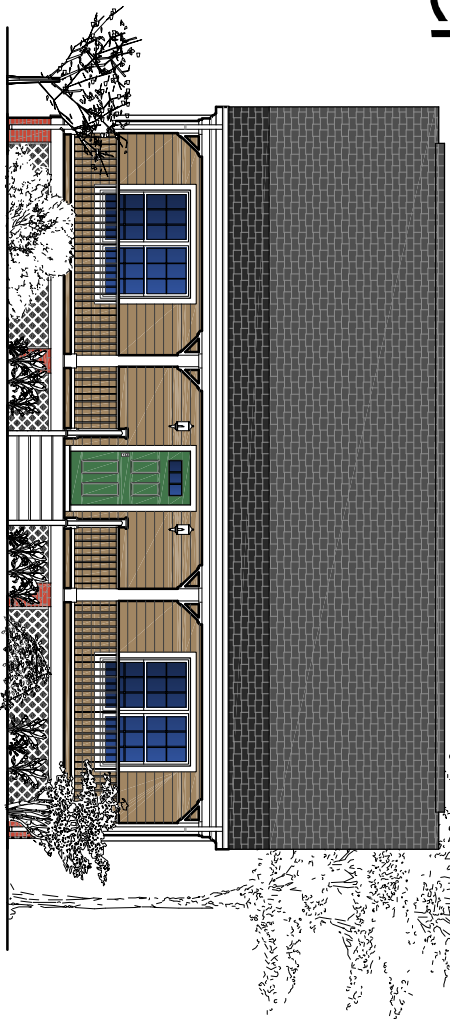


**1st FLOOR PLAN**

SCALE: 3/32" = 1'-0"

**Finishes**

- Siding - Vinyl siding, double 5" Dutchlap
- Foundation - Brick
- Front Porch - Pressure Treated Pine (stained), Richmond Railing, Brick Piers, Fiberglass/Wood Box Columns
- Deck - Pressure Treated Pine (stained)
- Exterior Trim - Maintenance free vinyl
- Windows - Double pane Insulated Vinyl
- Roofing - Fiberglass Shingles
- Flooring
  - General - carpet
  - Kitchen / Baths / Laundry - vinyl
  - Entry Foyer, Hall - vinyl

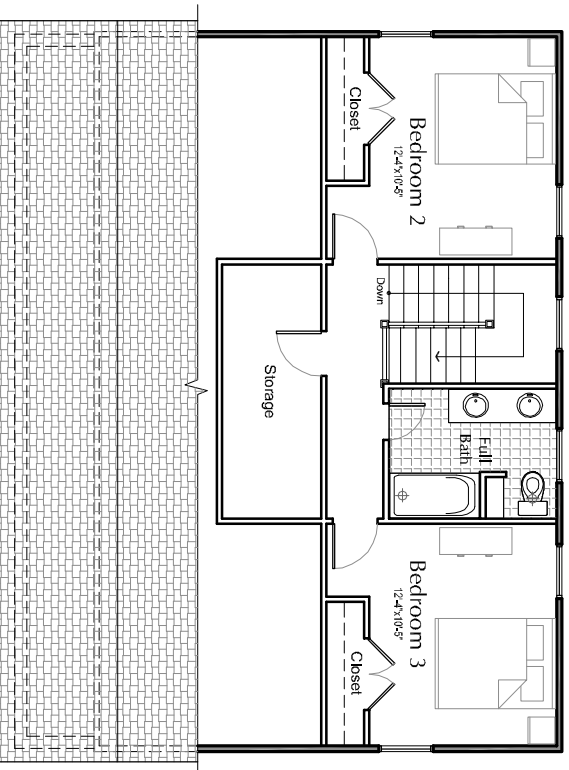


**FRONT ELEVATION**

SCALE: 3/32" = 1'-0"

**Description**

3 Bedroom, 2-full & 1-half Baths w/ 1st Floor Master Bedroom Suite  
 1st Floor - 1,040 sq.ft  
 2nd Floor - 620 sq.ft  
 Total Area - 1,660 sq.ft.



**2nd FLOOR PLAN**

SCALE: 3/32" = 1'-0"

# Mimosa Creek

design by